



Milton House Albert Drive, Low Fell, NE9 6EJ

£475,000

Nestled in the heart of Low Fell on Albert Drive, this superb terraced house spans four impressive floors, offering a blend of original charm and modern enhancements. With six spacious bedrooms and two well-appointed bathrooms, this property is perfect for families seeking both comfort and style. As you enter, you are greeted by a welcoming vestibule featuring a tiled floor and an inset welcome mat. The hallway, adorned with elegant oak flooring, leads you to a delightful dining room equipped with an integrated fridge/freezer and a larder cupboard, ideal for entertaining. The lounge, seamlessly connected to the dining area, boasts bespoke storage in the alcoves and a cosy log-burning stove set within an inglenook, creating a warm and inviting atmosphere. The lower ground floor is a true highlight, featuring an entertainment or cinema room and a playroom which features an integrated fridge and a wine fridge. French doors provide access to the beautifully landscaped rear garden, which is perfect for outdoor cooking and entertaining. This level also includes a utility room and a stunning shower room, adding to the home's functionality. On the first floor, you will find the family bathroom and three exquisite bedrooms, two of which features fitted wardrobes, one with a charming fire surround. The second floor is thoughtfully designed with a landing that includes a bespoke library and seating area as well as a desk for study or home office. Four large Velux windows floods the space with light and offers fantastic views. This floor also accommodates three additional bedrooms. The rear garden is a tranquil South facing retreat, complete with paved patio areas, bespoke archway, stone feature wall, outdoor lighting, and raised borders, perfect for enjoying the outdoors. With plantation shutters adorning all windows, this beautiful family home is a true gem. Viewings are essential to fully appreciate the quality and character this property has to offer.

ENTRANCE VESTIBULE

ENTRANCE HALLWAY



KITCHEN

12'2" x 7'5" (3.72m x 2.28m)



DINING ROOM

14'11" ex alcoves x 10'5" (4.55m ex alcoves x 3.18m)

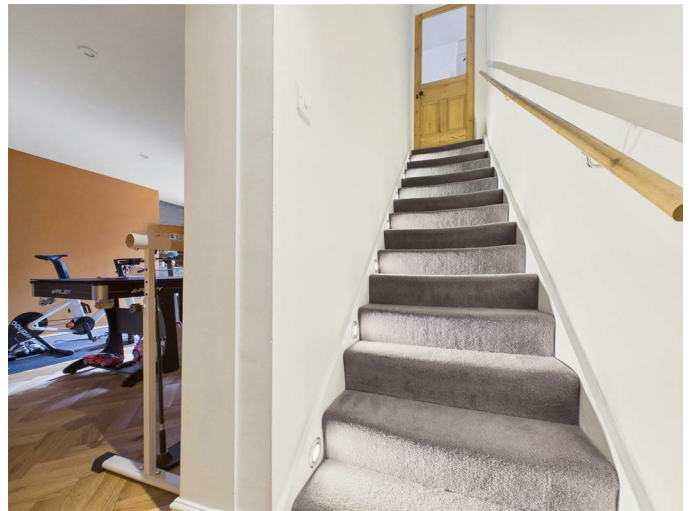


LOUNGE

19'3" into bay x 15'10" into alcoves (5.89m into bay x 4.84m into alcoves)



LOWER GROUND



FAMILY/CINEMA ROOM

17'9" x 13'4" (5.43m x 4.07m)

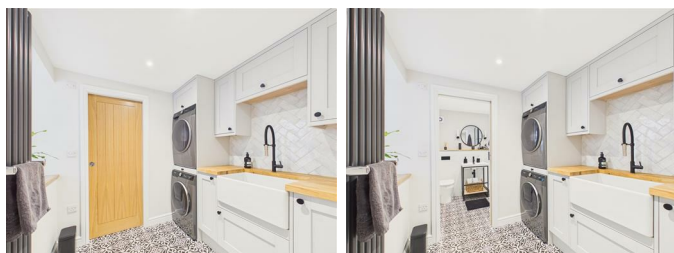
PLAYROOM

15'9" x 14'4" into alcoves (4.82m x 4.37m into alcoves)



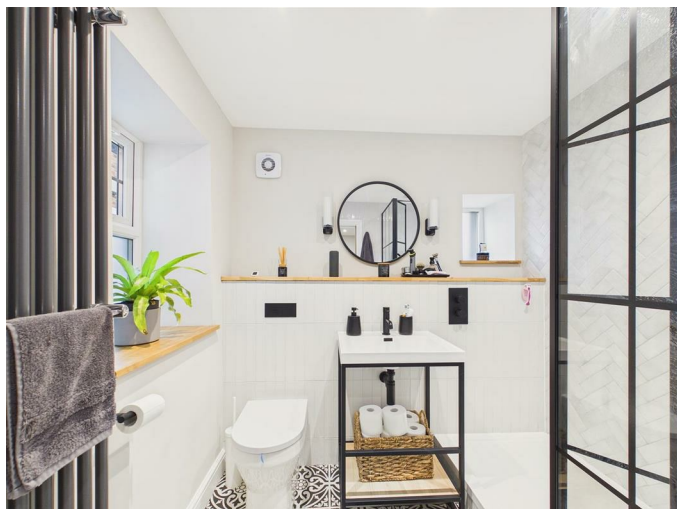
UTILITY ROOM

6'11" x 6'3" (2.11m x 1.91m)

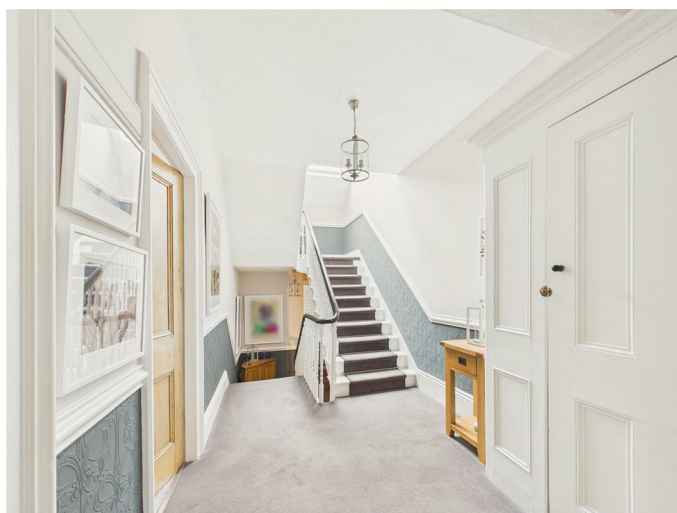


SHOWER ROOM

9'10" x 6'0" (3.00m x 1.83m)



FIRST FLOOR LANDING



BEDROOM ONE

14'10" x 12'6" (4.54m x 3.83m)



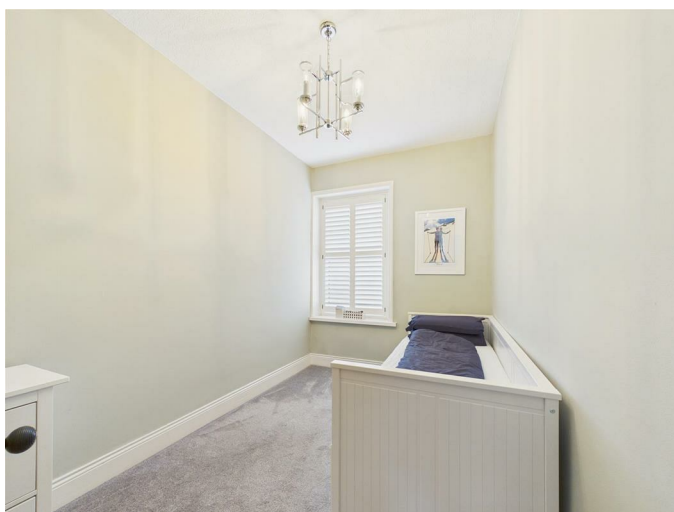
BEDROOM TWO

14'10" x 11'6" (4.54m x 3.53m)



BEDROOM THREE

11'6" x 7'5" (3.53m x 2.27m)



FAMILY BATHROOM

9'2" x 7'4" (2.80m x 2.26m)



BEDROOM FIVE

12'9" x 11'10" (3.90m x 3.62m)



HOME OFFICE/BEDROOM SIX

13'10" x 8'8" (4.24m x 2.65m)



SECOND FLOOR LANDING



BOARDED LOFT

19'8" x 7'6" (6.00m x 2.3m)

BEDROOM FOUR

12'10" x 12'5" (3.93m x 3.80m)



EXTERNAL



Property disclaimer

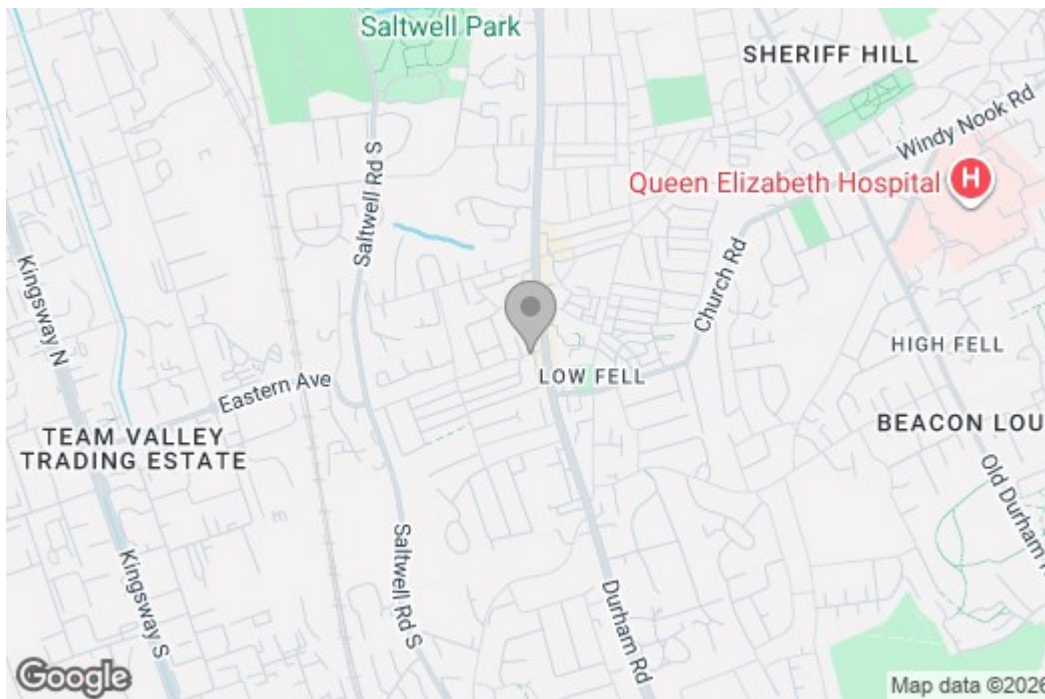
IMPORTANT NOTE TO PURCHASERS: We endeavour to make our sales particulars accurate and reliable, however, they do not constitute or form part of an offer or any contract and none is to be relied upon as statements of representation or fact. The services, systems and appliances listed in this specification have not been tested by us and no guarantee as to their operating ability or efficiency is given. All measurements have been taken as a guide to prospective buyers only, and are not precise. Floor plans where included are not to scale and accuracy is not guaranteed. If you require clarification or further information on any points, please contact us, especially if you are travelling some distance to view. Fixtures and fittings other than those mentioned are to be agreed with the seller. We cannot also confirm at this stage of marketing the tenure of this house.

Agent Note

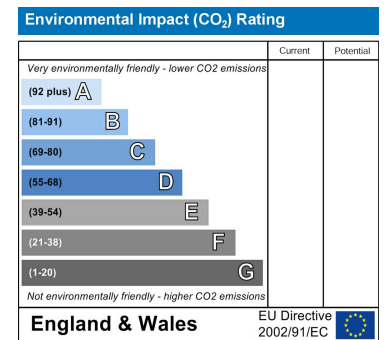
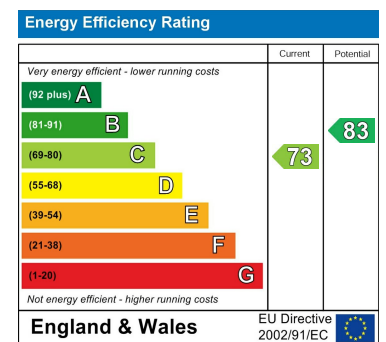
Residents also have access to Albert Private Park. Cast iron radiators in key rooms.

Floor Plan

Area Map



Energy Efficiency Graph



These particulars, whilst believed to be accurate are set out as a general outline only for guidance and do not constitute any part of an offer or contract, purchaser should not rely on them as statements of representation of fact, but must satisfy themselves by inspection or otherwise as to their accuracy. No person in this firm's employment has the authority to make or give an representation or warranty in respect of the property.